

# INSTRUCTIONS FOR THE INSTALATION OF YOUR SOLID WOOD COUNTERTOP

In order to be successful with the installation of your countertop, you must respect two very important rules and have the basic tools at hand:

**Rule #1 :** Because wood is a hygroscopic material, that is it readily absorbs water from the atmosphere, it will change dimensions with the seasons. You must therefore allow the countertop to move on the cabinetry while at the same time remaining flat.

**Rule #2:** The top and the bottom of the counter must have the same finish. (beeswax, oil or varnish) so that the 2 wood surfaces can adjust simultaneously to the atmosphere of your home.

## Tools and hardware required for the installation



Drill



Jig saw



No 8 screws and 1/2" washers



1/4", 3/16" and 1/8" drill bits

## **STEPS FOR INSTALLATION**

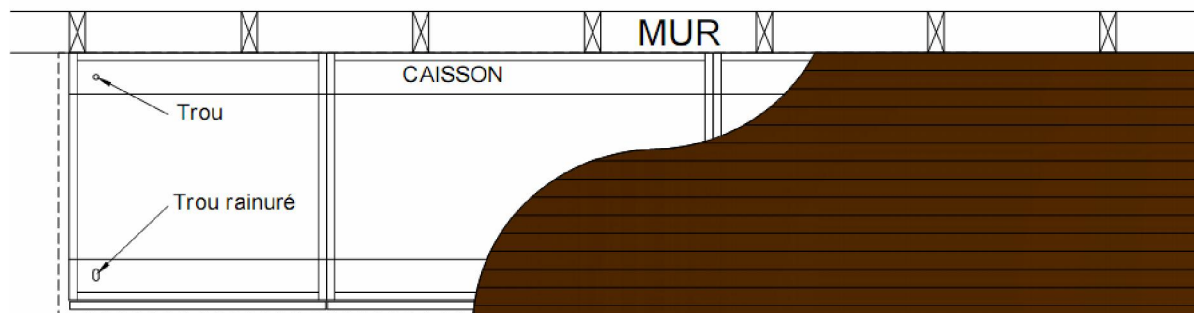
Once you have confirmed that the finish on both sides of your counter is the same, you can begin the installation.

Determine the various points on the cabinetry or other base components where the countertop will be attached. Usually these points correspond to the four corners of the counter. The distance between these anchor points must not exceed 1.5 meters (60 inches). If there is a wall adjacent to the counter and the wood grain of the counter runs parallel to the wall (figure 1), the counter must be attached so that movement due to the expansion of the countertop occurs at the front of the counter and not toward the back. To accomplish this, the holes at the front of the cabinetry are slotted perpendicularly to the wood grain, which allows the front screws to move freely within the groove while keeping the countertop level on the cabinetry (figure 2). The screw holes at the back are not grooved, and should be 3/16" diameter, the same diameter as the threads on a no. 8 Robertson screw. Being stationary, the back screws will prevent movement of the back of the countertop caused by changes in its dimensions. Any movement will be transferred to the front. If there is no adjacent wall, as with an island countertop, you should slot all the screw holes. Refer to figures 3 to 8 for instructions for drilling the cabinetry and screwing the counter in place.

Figure 1

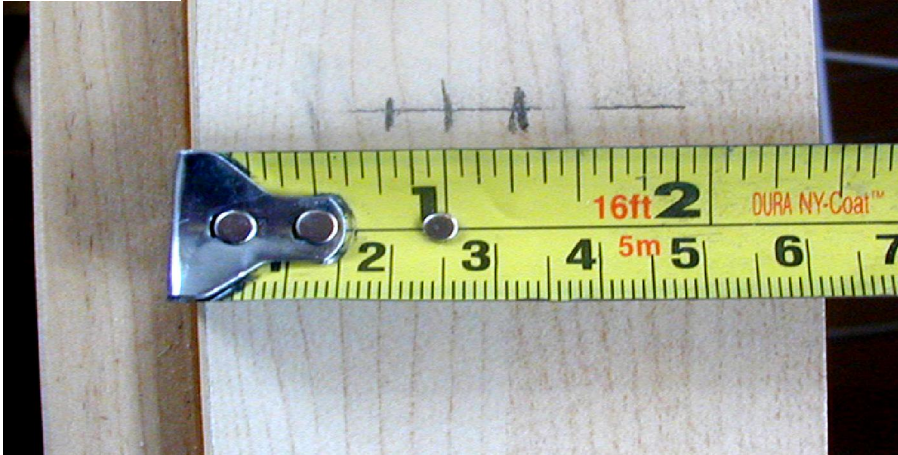


Figure 2



VUE EN PLAN

Figure 3



First measure and place a mark about 25 mm (1 inch) from the front edge on the front board of the cabinetry on which your counter will be installed (figure 3).

Figure 4



Through this board drill 2 holes of 6 mm (1/4" diameter), one on either side of the original mark (figure 3) and approximately 12 mm (1/2 inch) apart. The holes must be drilled perpendicular to the cabinetry board (figure 4).

Figure 5

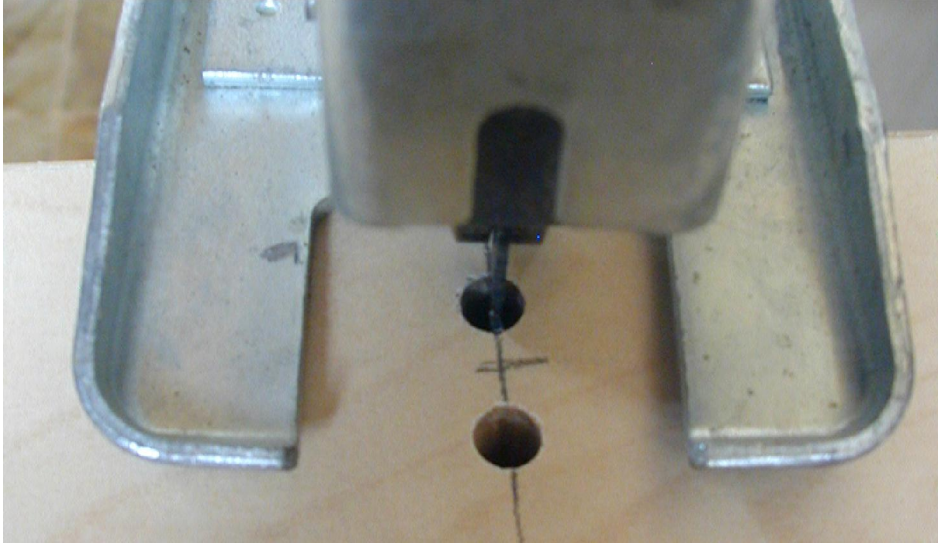


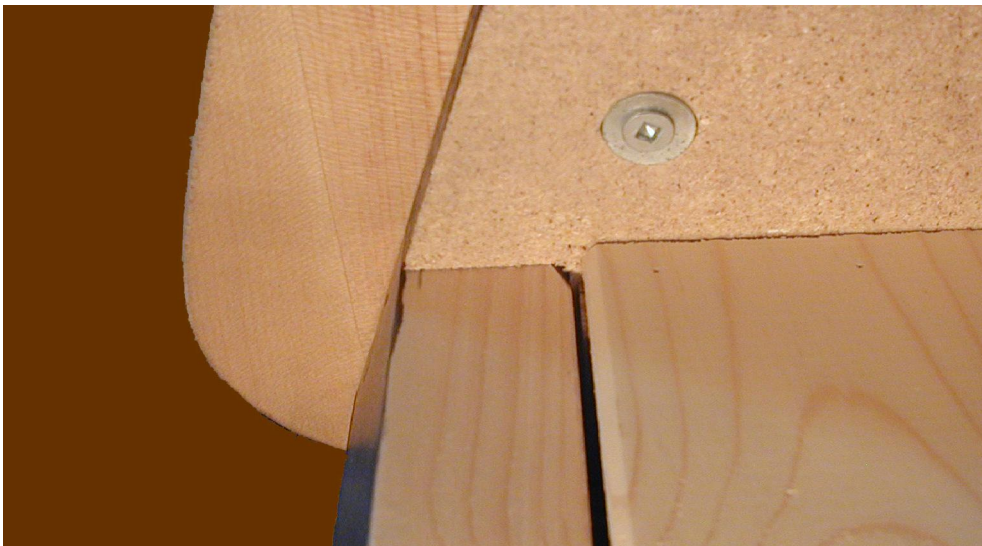
Figure 6



**With a jig saw, hollow out the section between the two holes to create an open groove (figure 5 and 6).**

Place your section of counter onto the cabinetry or base you have now prepared. Be certain that the counter is exactly in its final position. To avoid breaking the screw or splitting or damaging the countertop, pre-drill a hole the same length as the screws you will be using to attach the wooden countertop but slightly smaller in diameter (drilling through the holes that you have just made ) (figure 7).

Figure 8



Firmly attach the countertop onto the cabinet with a wood screw and washer placed into the hole or at the centre of the groove that you have made. Attached in this way, the counter can undergo expansion and contraction without losing its shape (figure 8).

